



# Bornemann Pumps



**Vertical line**  
EU Pump

**High pressure line**  
EP Pump

**Basic line**  
EH, EL and ER Pumps

Industrial catalog

# Vertical line EU Pump

## Vertical progressive cavity pump

For API sump, earth sumps and sewers

### Characteristics:

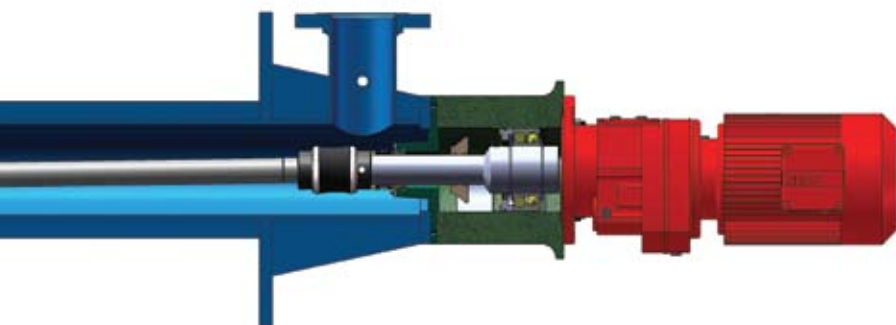
- **Flow** of up to more than 100 m<sup>3</sup>/h
- **Pressure** 12, 24, and 40 bar
- Normalized motors IP 55 / Ex(e) / Ex(d)
- Coaxial reduction gears
- Watertight coupling lantern
- Shaft seal drainage with integrated returning to sump
- Assembly in 14", 12" ó 10" flanges according to the model. Other sizes available
- Normalized Discharge Flanges ANSI 150 or 300. Other available
- Robust Bearing Housing, maintenance free
- Simple easy to maintain design
- API sumps
- Earth Sumps
- Pipeline sewers
- Dry chambers
- Truck discharging
- Cistern trucks
- Refinery processes





#### Advantages:

- Easy to install on concrete gravestone and tank leads
- Normalized flange measures ANSI 150
- Pump immersed in the lowest place
- Excellent NPSH
- Total emptying, it prevents from sediment accumulation
- It manages variable viscosity fluids : Gasoline and condensed fluids - formation and crude water - mud, viscous waste
- Suspended solids
- Flows from 1 up to more than 100 m /h
- Discharge pressure of 6, 12, 24 and 40 bar
- It doesn't need to be fixed to the bottom due to its low speed rotation.
- Security valve with return to the sump
- Direct return of packing/seal to the sump
- Coupling watertight lantern, weather tight
- Concentric and normalized assembly of gear motors
- Self centered and aligned coupling
- Stainless steel stator seats in frames and flange
- Hermetic shielded cardan joints, 100% hermetic in stainless steel
- Zinc plated or stainless steel inlet strainer
- Stainless steel drive shaft and cardan joints
- Pump download diameter inscribed within the mounting flange



# High pressure line EP Pump

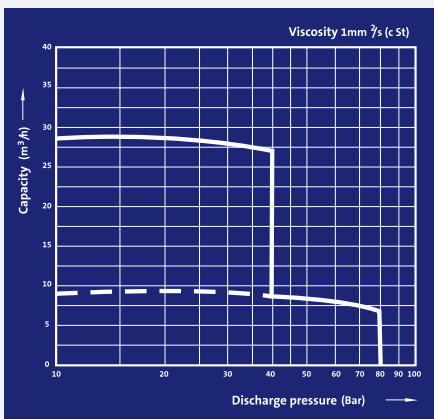
## High pressure progressive cavity pumps

Pump for new process with extreme pressures

### Operation and performance

EP (Extreme Pressure) series eccentric progressive cavity pumps belong to the family of the rotating positive displacement pumps. The liquid goes through the pump in an axial way in a practically laminar flow regime. Their required NPSH is extremely low. Their pumping elements are the stator and the rotor in a material suitable for each fluid.

The following graph shows the actual available capacities:



*The elastomer used determines the admissible temperature*

### Pumping principle:

- Turbulence and pulsations free pumping
- Careful transport without cutting efforts
- Viscosities up to 1 million of cSt
- Self sucking up to extreme vacuums
- They transport liquids containing gases or foams
- Reversible flow
- Flow proportional to the revolutions, allowing the dosing and regulation of the flow with a frequency inverter
- Constant and independent to revolutions discharge pressure
- Transports solids from 11 up to more than 35mm diameter

### Applications:

- For all kinds of viscosity fluids, petrol, with solids
  - In the battery
  - Transfer
  - Injection
- Mud movement, sprays and dispersions
- Chemical and oil industry
- Paper, beverage and food industry
- Water treatment and membrane technology

### Building Characteristics:

- Horizontal pumps with a basic assembly were developed with the experience acquired during many years in standard pumps and with a large series of practical tests in achieving relatively high pressures (80 Bar)  
All the components are dimensioned for a continuous service in highly demanding applications
- Cardan joints are designed for the highest loadings
- Various tested systems are available for shaft sealing
- According to the material selection most varied chemical composition fluids can be pumped
- Pumps can be driven by all the known driving devices. Thanks to their design, pumps don't need practically any maintenance and they enable a simple assembly and an easy operation
- Components designed under standards and pressure rating
- Absolutely airtight cardan joints, qualified for torque and axial charges
- Many option of shaft seal, different API plans available
- Materials according to chemical and corrosive characteristics of the fluid
- Driven according to the users requirements: direct, speed reducer, belts and pulleys, frequency inverter
- Peripheral components: valves and accessories, instrumentation according to area classification, engine control and control panels, protections, commands and radio transmitting data



# Basica line EH, ER, EL Pump

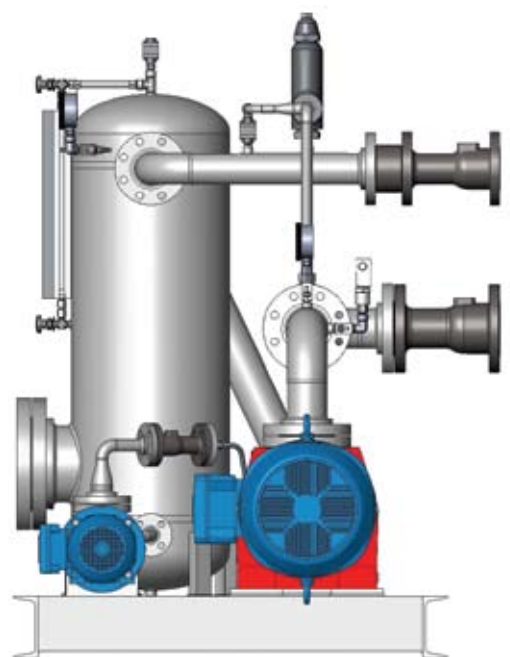
Pumps for all kind of industry

## Characteristics:

- **EH pumps**  
Basic pump, industrial version, with external bearing housing  
Multiple versions
- **ER pumps**  
Industrial pump, with hopper and screw feeder  
For fluids of extreme viscosity or difficult flow
- **EL pumps**  
Basic pump, industrial version, compact. Easy to assemble with small dimensions. Normalized. Multiple versions



**EU Pump**  
With special sealing system



**High pressure  
Multiphase system**

## Technical data

Type Size	$\Delta P_{max.}$ [bar]	$Q_0$ [m <sup>3</sup> /h] an = 100 min <sup>-1</sup>	$N_{max.}$ [min <sup>-1</sup> ]	ANSI Flanges	
				Discharge DN <sub>D</sub>	Suction DN <sub>S</sub>
EP 2-16/40	40	0,10	1450	1 ½"	1 ½"
EP 2-16/80	80	0,10	1300	1 ½"	1 ½"
EP 8-25/40	40	0,41	1000	1 ½"	1 ½"
EP 8-25/80	80	0,41	600	1 ½"	1 ½"
EP 32-40/40	40	1,75	800	2"	2"
EP 32-40/48	48	1,75	600	2"	2"
EP 32-40/80	80	1,75	500	2"	2"
EP 56-40/40	40	2,90	600	2 ½"	2 ½"
EP 100-50/40	40	5,60	500	2 ½"	2 ½"
EP125-63/ 32	32	7,16	400	4"	4"
EP125-63/64	64	7,16	400	4"	4"
EP 200-63/24	24	11,5	400	4"	4"
EP 200-63/40	40	11,5	400	4"	4"

Peripheral components, valves and accessories, accessories for the shaft seal, flow, pressure and temperature instruments, etc., engine control devices, protections, etc. are offered on demand.



# Applications

- Fuel oil
- Multiphase fluids
- Effluents
- Emulsions
- Dosing in sewage water treatment
- Condensed - KOD
- Adhesives
- Oil and additives
- Vegetal oil
- Hydrated lime - Milk of lime
- Pumping to all kinds of filters
- Production boosting
- All kind of suspensions
- Solutions
- Inks
- Polymers
- Fibers
- Diatomaceous earth
- Dough and pulp
- Extreme viscosity



## Accessories

- Seal systems under API Specifications
- Flow sensors
- Dry running protection
- Special painting procedures
- Special supports
- Plug & Pump solutions (ready to use)
- Special tests



## Certifications and standards

**Bombas Bornemann SRL** apply to the following standards:  
API 676, ISO 9001, ISO 14001





# Bornemann Pumps

**Joh. Heinr. Bornemann** was founded in 1853; the company is a world leader in the design and manufacturing of progressive cavity pumps with more than 95 points of assistance worldwide. Since 1983, **Argentina Bornemann Pumps** produce pumps in this country with the quality and technology of the Joh. Heinr Bornemann German group. Simple progressive cavity pumps for the pumping of all kinds of fluid. They are mainly used for soft pumping of fluids: cream, cheese, fine wine, air or gas solved fluids, heterogeneous fluids without producing any emulsion. Pumping of fluids with particles: yoghurt with fruit, must, liquid distilled from grapes or herb pressings, wine must, preserves, mud with sand, pulp, fluids with fibers. Pumping of fluids which are difficult to suck: extraction of distillers, evaporators and bunchers' bottoms. Pumps for oil industry: separation station and plant, API pool and ground pool, recirculation, portable equipment, sediment and mud extraction, water formation and re-injection. Multiphase Pumps (water, oil and gas simultaneously).

Besides, **Bornemann Pumps** Pumps count with a complete after sales service with a wide and professional world-wide representatives network. We are able to provide and administrate CAD systems and ready to use process engineering.

**Bornemann Pumps** have certified in ISO 9001 and have ultra-sanitary 3A approved models. Besides, they have certified ISO 14001 standards. It is additionally the representative and authorized service of the German companies:

**Philipp Hilge**

*Highly sanitary Centrifugal Pumps*

**Bran + Luebbe**

*Pumps and dosing systems*

**Aerzen**

*Compressors and blowers*

**Jabsco**

*Lobe and flexible rotor pumps*

**Kral**

*Three spindle progressive cavity pumps*

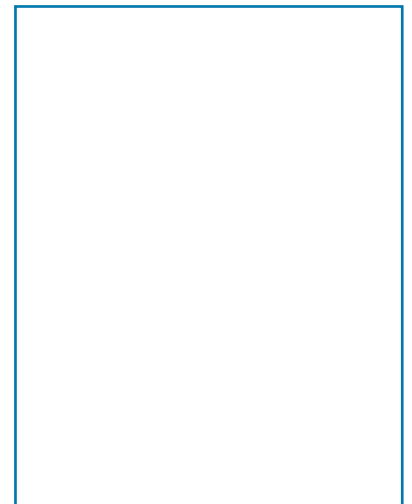
**Krytem**

*Pumps and cryogenic systems*

**Pumps and systems engineering for food,  
ecological, oil and naval industry**



**Distributor**



**Argentina**

**Bombas Bornemann S.R.L.**

Part of the J.H. Bornemann GmbH Group - Germany

Armenia 2898 - B1605CDP Munro - Bs.As. - Argentina

Tel.: +5411 4756-8008 Fax: +5411 4756-5541

E-mail: info.ar@bornemann.com - www.bornemann-ar.com